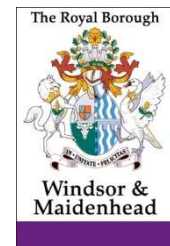


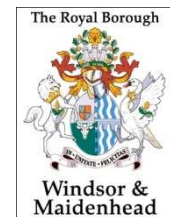
Legoland Traffic Update

Tony Carr
Traffic and Road Safety Manager



Traffic Signal Switch-Off Trial

- Heavy traffic flows/congestion on corridor from M4 to Legoland during summer months
- Suggestion that Imperial Rd/Clewer Hill Road junctions operating as a bottleneck and a major contribution to the traffic problem
- Trial signal switch-off scheme to allow free flow of traffic through these junctions



Traffic Signal Switch-Off Trial

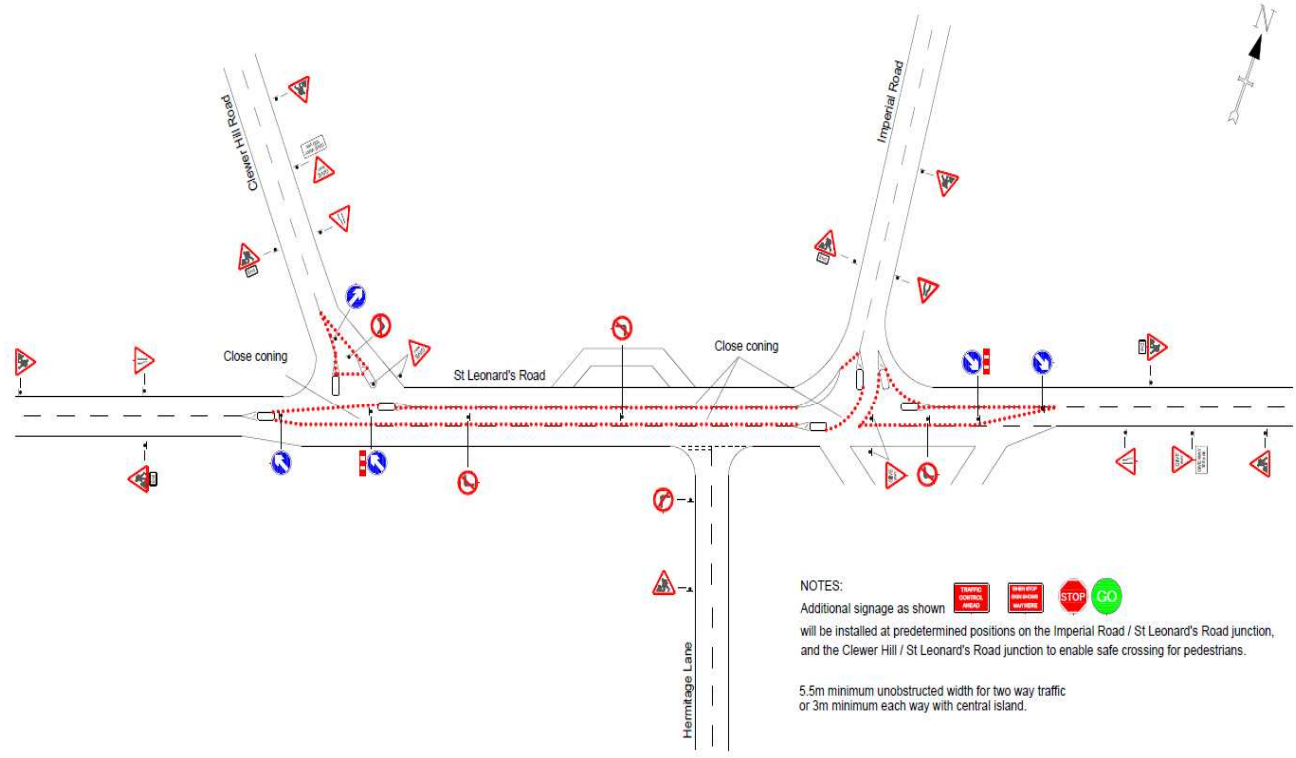
- Trial scheme introduced weekend 31st Aug/1st Sept
- Traffic flows/queue lengths monitored for comparisons with weekend 17th/18th Aug
- Camera monitoring/permanent traffic monitoring site

DATE AND TIMES		METHOD STATEMENT NO.	
LOCATION		JUNCTION NAME IF REQ'D	

WORKS ACCESS & WORKS EXIT to be determined on site



SIGN WITH CONE AND FLASHING LIGHT TO BE PLACED IN ADVANCE TO FIRST WARNING SIGN IN A SUITABLE LOCATION



NOTES:
 Additional signage as shown will be installed at predetermined positions on the Imperial Road / St Leonard's Road junction, and the Clewer Hill / St Leonard's Road junction to enable safe crossing for pedestrians.

5.5m minimum unobstructed width for two way traffic or 3m minimum each way with central island.

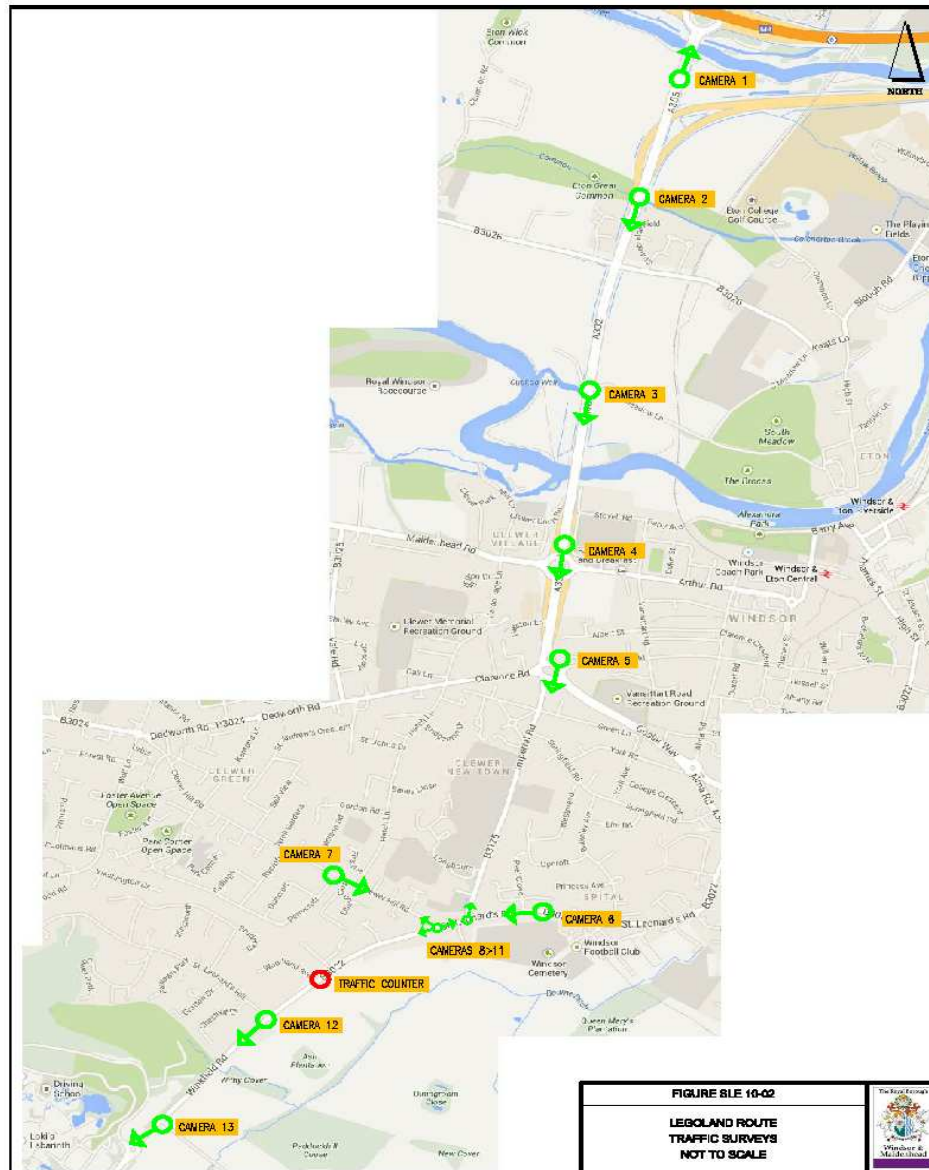
APPROVED BY:

DRAWN BY	CHRIS DAVIS
SCALE	NOT TO SCALE
DATE	AUGUST 2013



CLIENT / SCHEME	RBWM
DRAWING TITLE	CLEWER HILL & ST LEONARD JUNCTIONS - WINDSOR
DRAWING NUMBER	CTM/CD/RBWM001





Traffic Signal Switch-Off Trial

Results

- Traffic flows – Up to 10% higher during morning
- Traffic Queues – No significant change
- Journey Times – No significant change

Traffic Signal Switch-Off Trial

Public Reaction

- Negative feedback from affected local residents
- Negative response from local press
- No feedback from Legoland visitors

Traffic Signal Switch-Off Trial

Conclusion

- Scheme has demonstrated limited traffic benefits
- Significant dis-benefits to local residents/adverse public reaction
- Traffic bottleneck is Legoland junction/access/car park

Legoland Planning Application

- Proposal to re-develop Pirate Training Camp area
- Planning application suggests that this improved facility will have no impact upon traffic
- RBWM remain concerned about existing traffic problems in area and peak traffic days becoming a more common occurrence

Traffic Update

- On-going discussions with Legoland management
- High-level meeting with Legoland planned for mid-October
- Engagement with Police and HA about signing on HA network
- Review of left-turn coning at entrance

Traffic Signal Switch-Off Trial

